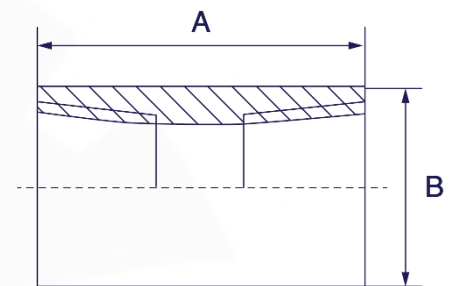


FULL COUPLING (BSPT THREADED)

Size	Part No.	Impa Code	A	B	Weight (Kg)
1/8"	FL-S-CF-R-150-02	73 25 66	17.0	13.0	0.0160
1/4"	FL-S-CF-R-150-04	73 25 67	24.0	16.5	0.0350
3/8"	FL-S-CF-R-150-06	73 25 68	25.0	20.0	0.0460
1/2"	FL-S-CF-R-150-08	73 25 69	32.0	24.0	0.0790
3/4"	FL-S-CF-R-150-12	73 25 70	35.0	30.0	0.1040
1"	FL-S-CF-R-150-16	73 25 71	41.0	37.0	0.1810
1 1/4"	FL-S-CF-R-150-20	73 25 72	47.0	46.0	0.2700
1 1/2"	FL-S-CF-R-150-24	73 25 73	47.0	52.0	0.3080
2"	FL-S-CF-R-150-32	73 25 74	54.0	64.5	0.4660
2 1/2"	FL-S-CF-R-150-40	-	61.0	81.0	0.6530
3"	FL-S-CF-R-150-48	-	74.0	94.0	0.8320
4"	FL-S-CF-R-150-64	-	80.0	121.0	1.3390



FULL COUPLING (NPT THREADED)

Size	Part No.	Impa Code	A	B	Weight (Kg)
1/8"	FL-S-CF-N-150-02	-	17.0	13.0	0.0160
1/4"	FL-S-CF-N-150-04	-	24.0	16.5	0.0350
3/8"	FL-S-CF-N-150-06	-	25.0	20.0	0.0460
1/2"	FL-S-CF-N-150-08	-	32.0	24.0	0.0790
3/4"	FL-S-CF-N-150-12	-	35.0	30.0	0.1040
1"	FL-S-CF-N-150-16	-	41.0	37.0	0.1810
1 1/4"	FL-S-CF-N-150-20	-	47.0	46.0	0.2700
1 1/2"	FL-S-CF-N-150-24	-	47.0	52.0	0.3080
2"	FL-S-CF-N-150-32	-	54.0	64.5	0.4660
2 1/2"	FL-S-CF-N-150-40	-	61.0	81.0	0.6530
3"	FL-S-CF-N-150-48	-	74.0	94.0	0.8320
4"	FL-S-CF-N-150-64	-	80.0	121.0	1.3390