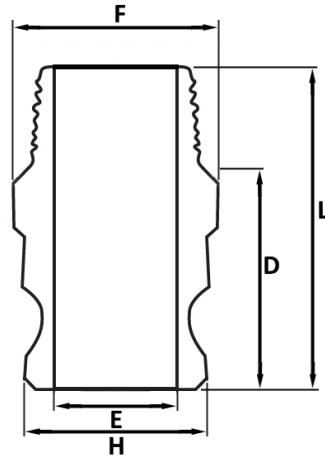


**TYPE F: MALE ADAPTER x MALE THREAD**



Type F	1/2"	3/4"	1"	1 1/4"	1 1/2"	2"	2 1/2"	3"	4"
D	33.3	32.1	38.5	46.92	49.37	54.3	57	62.6	63.4
E	16.5	23.4	27	34.2	43.95	51.4	64.3	78.5	105.3
F	22	26.9	38.4	47.07	55.65	65.4	77.5	93.9	122.3
H	23.8	32	36.7	45.2	53.1	63	75.8	91.4	119.6
L	48.4	46.3	56.1	66.4	70.4	76.3	83.8	89.8	92.7