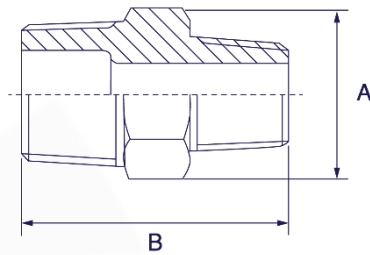


**REDUCING HEX NIPPLE (BSPT THREADED)**

Size	Part No.	Impa Code	A	B	Weight (Kg)
1/4" x 1/8"	FL-S-NR-R-150-04-02	-	14.5	22.5	0.0184
3/8" x 1/8"	FL-S-NR-R-150-06-02	-	18.0	24.0	0.0407
3/8" x 1/4"	FL-S-NR-R-150-06-04	-	18.0	26.5	0.0407
1/2" x 1/8"	FL-S-NR-R-150-08-02	-	21.4	27.5	0.0585
1/2" x 1/4"	FL-S-NR-R-150-08-04	-	21.4	30.0	0.0585
1/2" x 3/8"	FL-S-NR-R-150-08-06	-	21.4	30.5	0.0585
3/4" x 1/8"	FL-S-NR-R-150-12-02	-	27.0	29.0	0.0881
3/4" x 1/4"	FL-S-NR-R-150-12-04	-	27.0	31.5	0.0881
3/4" x 3/8"	FL-S-NR-R-150-12-06	-	27.0	32.0	0.0881
3/4" x 1/2"	FL-S-NR-R-150-12-08	-	27.0	35.5	0.0881
1" x 1/8"	FL-S-NR-R-150-16-02	-	34.0	32.0	0.1490
1" x 1/4"	FL-S-NR-R-150-16-04	-	34.0	34.5	0.1490
1" x 3/8"	FL-S-NR-R-150-16-06	-	34.0	35.0	0.1490
1" x 1/2"	FL-S-NR-R-150-16-08	-	34.0	38.5	0.1490
1" x 3/4"	FL-S-NR-R-150-16-12	-	34.0	39.5	0.1490
1 1/4" x 1/4"	FL-S-NR-R-150-20-04	-	42.7	37.5	0.2358
1 1/4" x 3/8"	FL-S-NR-R-150-20-06	-	42.7	38.0	0.2358
1 1/4" x 1/2"	FL-S-NR-R-150-20-08	-	42.7	41.5	0.2358
1 1/4" x 3/4"	FL-S-NR-R-150-20-12	-	42.7	42.5	0.2358
1 1/4" x 1"	FL-S-NR-R-150-20-16	-	42.7	45.0	0.2358
1 1/2" x 3/8"	FL-S-NR-R-150-24-06	-	48.6	38.0	0.3066
1 1/2" x 1/2"	FL-S-NR-R-150-24-08	-	48.6	41.5	0.3066
1 1/2" x 3/4"	FL-S-NR-R-150-24-12	-	48.6	42.5	0.3066
1 1/2" x 1"	FL-S-NR-R-150-24-16	-	48.6	45.0	0.3066
1 1/2" x 1 1/4"	FL-S-NR-R-150-24-20	-	48.6	47.5	0.3066
2" x 1/2"	FL-S-NR-R-150-32-08	-	60.5	45.5	0.4308
2" x 3/4"	FL-S-NR-R-150-32-12	-	60.5	46.5	0.4308
2" x 1"	FL-S-NR-R-150-32-16	-	60.5	49.0	0.4308
2" x 1 1/4"	FL-S-NR-R-150-32-20	-	60.5	51.5	0.4308
2" x 1 1/2"	FL-S-NR-R-150-32-24	-	60.5	51.5	0.4308
2 1/2" x 1"	FL-S-NR-R-150-40-16	-	78.0	52.0	0.7000
2 1/2" x 1 1/4"	FL-S-NR-R-150-40-20	-	78.0	54.5	0.7300
2 1/2" x 1 1/2"	FL-S-NR-R-150-40-24	-	78.0	54.5	0.7390
2 1/2" x 2"	FL-S-NR-R-150-40-32	-	78.0	59.0	0.9340
3" x 1 1/4"	FL-S-NR-R-150-48-20	-	91.0	58.0	1.0160
3" x 1 1/2"	FL-S-NR-R-150-48-24	-	91.0	58.0	1.0880
3" x 2"	FL-S-NR-R-150-48-32	-	91.0	62.5	1.0690
3" x 2 1/2"	FL-S-NR-R-150-48-40	-	91.0	62.5	1.3810
4" x 1 1/2"	FL-S-NR-R-150-64-24	-	116.0	64.5	1.7540
4" x 2"	FL-S-NR-R-150-64-32	-	116.0	69.0	1.7540
4" x 2 1/2"	FL-S-NR-R-150-64-40	-	116.0	71.0	1.7500
4" x 3"	FL-S-NR-R-150-64-48	-	116.0	74.0	2.2000



**REDUCING HEX NIPPLE (NPT THREADED)**

Size	Part No.	Impa Code	A	B	Weight (Kg)
1/4" x 1/8"	FL-S-NR-N-150-04-02	-	14.5	22.5	0.0184
3/8" x 1/8"	FL-S-NR-N-150-06-02	-	18.0	24.0	0.0407
3/8" x 1/4"	FL-S-NR-N-150-06-04	-	18.0	26.5	0.0407
1/2" x 1/8"	FL-S-NR-N-150-08-02	-	21.4	27.5	0.0585
1/2" x 1/4"	FL-S-NR-N-150-08-04	-	21.4	30.0	0.0585
1/2" x 3/8"	FL-S-NR-N-150-08-06	-	21.4	30.5	0.0585
3/4" x 1/8"	FL-S-NR-N-150-12-02	-	27.0	29.0	0.0881
3/4" x 1/4"	FL-S-NR-N-150-12-04	-	27.0	31.5	0.0881
3/4" x 3/8"	FL-S-NR-N-150-12-06	-	27.0	32.0	0.0881
3/4" x 1/2"	FL-S-NR-N-150-12-08	-	27.0	35.5	0.0881
1" x 1/8"	FL-S-NR-N-150-16-02	-	34.0	32.0	0.1490
1" x 1/4"	FL-S-NR-N-150-16-04	-	34.0	34.5	0.1490
1" x 3/8"	FL-S-NR-N-150-16-06	-	34.0	35.0	0.1490
1" x 1/2"	FL-S-NR-N-150-16-08	-	34.0	38.5	0.1490
1" x 3/4"	FL-S-NR-N-150-16-12	-	34.0	39.5	0.1490
1 1/4" x 1/4"	FL-S-NR-N-150-20-04	-	42.7	37.5	0.2358
1 1/4" x 3/8"	FL-S-NR-N-150-20-06	-	42.7	38.0	0.2358
1 1/4" x 1/2"	FL-S-NR-N-150-20-08	-	42.7	41.5	0.2358
1 1/4" x 3/4"	FL-S-NR-N-150-20-12	-	42.7	42.5	0.2358
1 1/4" x 1"	FL-S-NR-N-150-20-16	-	42.7	45.0	0.2358
1 1/2" x 3/8"	FL-S-NR-N-150-24-06	-	48.6	38.0	0.3066
1 1/2" x 1/2"	FL-S-NR-N-150-24-08	-	48.6	41.5	0.3066
1 1/2" x 3/4"	FL-S-NR-N-150-24-12	-	48.6	42.5	0.3066
1 1/2" x 1"	FL-S-NR-N-150-24-16	-	48.6	45.0	0.3066
1 1/2" x 1 1/4"	FL-S-NR-N-150-24-20	-	48.6	47.5	0.3066
2" x 1/2"	FL-S-NR-N-150-32-08	-	60.5	45.5	0.4308
2" x 3/4"	FL-S-NR-N-150-32-12	-	60.5	46.5	0.4308
2" x 1"	FL-S-NR-N-150-32-16	-	60.5	49.0	0.4308
2" x 1 1/4"	FL-S-NR-N-150-32-20	-	60.5	51.5	0.4308
2" x 1 1/2"	FL-S-NR-N-150-32-24	-	60.5	51.5	0.4308
2 1/2" x 1"	FL-S-NR-N-150-40-16	-	78.0	52.0	0.7000
2 1/2" x 1 1/4"	FL-S-NR-N-150-40-20	-	78.0	54.5	0.7300
2 1/2" x 1 1/2"	FL-S-NR-N-150-40-24	-	78.0	54.5	0.7390
2 1/2" x 2"	FL-S-NR-N-150-40-32	-	78.0	59.0	0.9340
3" x 1 1/4"	FL-S-NR-N-150-48-20	-	91.0	58.0	1.0160
3" x 1 1/2"	FL-S-NR-N-150-48-24	-	91.0	58.0	1.0880
3" x 2"	FL-S-NR-N-150-48-32	-	91.0	62.5	1.0690
3" x 2 1/2"	FL-S-NR-N-150-48-40	-	91.0	62.5	1.3810
4" x 1 1/2"	FL-S-NR-N-150-64-24	-	116.0	64.5	1.7540
4" x 2"	FL-S-NR-N-150-64-32	-	116.0	69.0	1.7540
4" x 2 1/2"	FL-S-NR-N-150-64-40	-	116.0	71.0	1.7500
4" x 3"	FL-S-NR-N-150-64-48	-	116.0	74.0	2.2000

